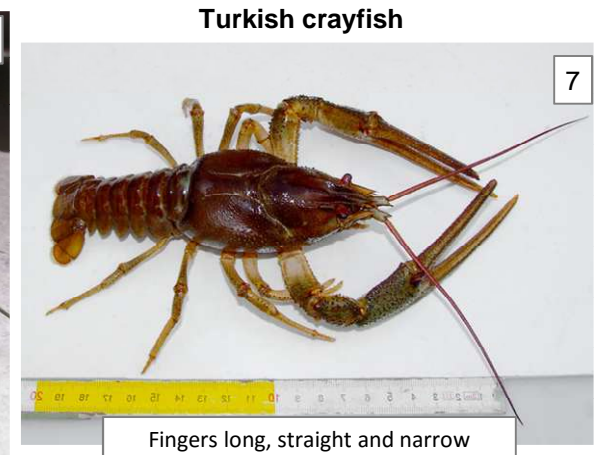
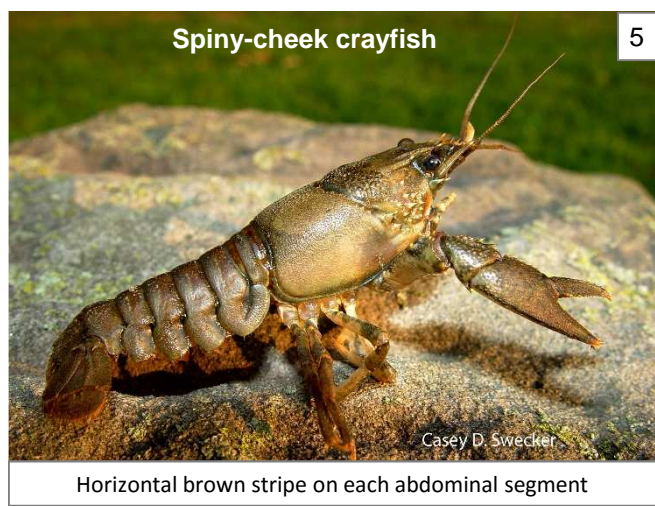
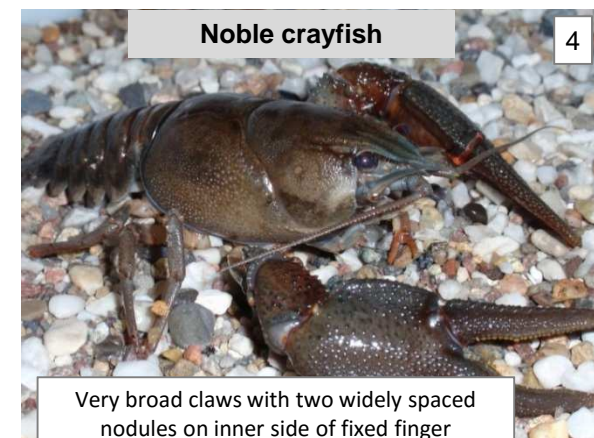
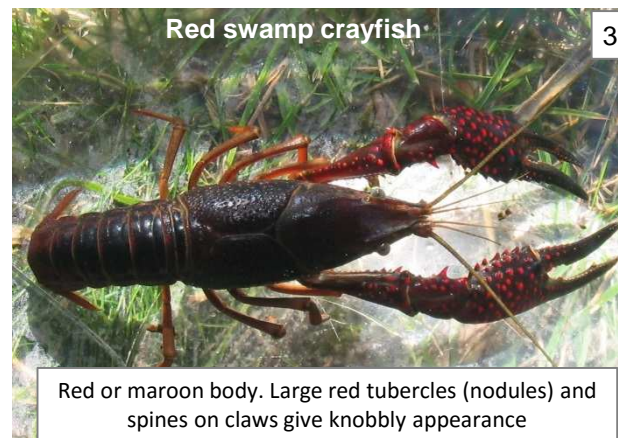
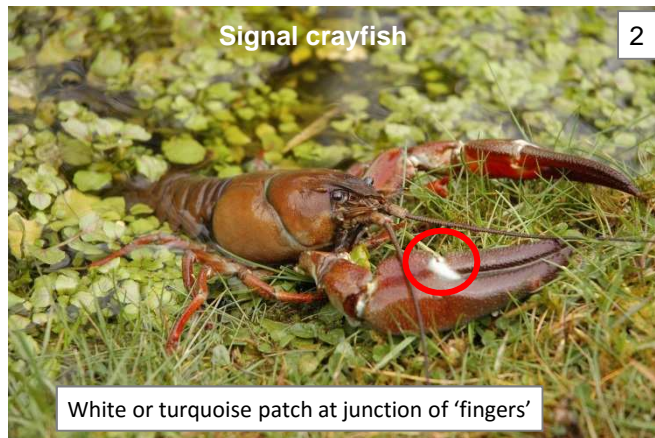


Identification tips for the **native** White-clawed crayfish and some **non-native** crayfish species
 (Body colour can be very variable)



Photo credits:

1. D. Gerke
2. Trevor Renals
3. I. Duloup_CC-BY-SA-3.0
4. www.uni-kiel.de/zoologie/limnologie/
5. Casey D. Swecker
6. Crown Copyright 2009
7. www.rakipolskie.pl



Report sightings: <http://records.biodiversityireland.ie/record/invasives> or by E-mail: invasives@biodiversityireland.ie

Identification tips on the claws of the **native** White-clawed crayfish and some **non-native** crayfish species
 (Underside of claws shown in the photos)

White-clawed crayfish



Whitish underside of claws, NEVER red

Photo credits:

1. NPWS Manual No. 45
2. GBNNS Crown Copyright 2009
3. Trevor Renals
4. Copyright Jens Keicher
5. Crown Copyright 2009
6. (c) Rian Vestors Natuurfotografie
7. © Michal Mañas. BioLib.cz

Signal crayfish



Underside of claws are red © NNSS

Turkish crayfish



Fingers of claws are long, straight and narrow

Spiny-cheek crayfish



Underside tip of claws are orange with a black band below

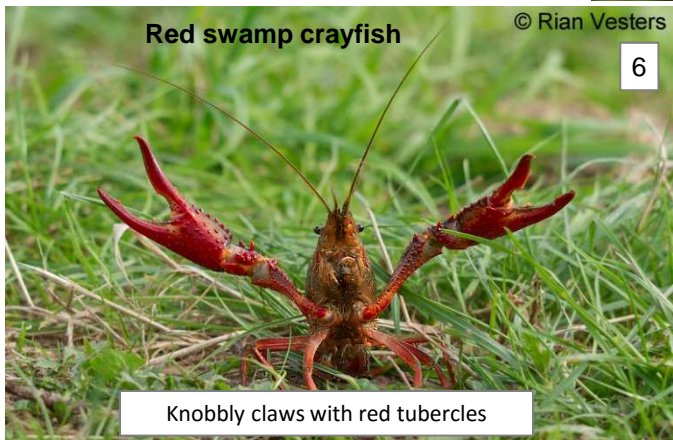
Marbled crayfish



Blue with marbled pattern

Red swamp crayfish

© Rian Vestors



Knobby claws with red tubercles

Noble crayfish



Caws very broad, reddish-brown underneath and with widely spaced nodules on the inner side of the fixed finger

Report sightings: <http://records.biodiversityireland.ie/record/invasives>
 or by E-mail: invasives@biodiversityireland.ie