

Sustainable Land Use Management for the Conservation of the Freshwater Pearl Mussel

K.A. O'Neill^{1,2}, J.S. Rowan², J.A. Finn¹ and
D. Ó hUallacháin¹

¹Teagasc, Environment Research Centre, Johnstown Castle, Wexford

²School of the Environment, University of Dundee, Dundee, DD1 4HN, Scotland



The Irish Agriculture and Food Development Authority

Freshwater Pearl Mussel



An endangered aquatic invertebrate
Earlier studies relate habitat quality to the
“physical connectivity”
of flowing water and the interstitial zone

Sediment Sources



Sediment Pathways



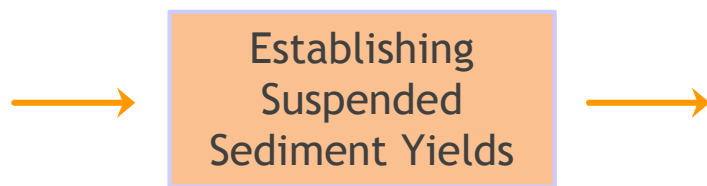
Sediment Receptors



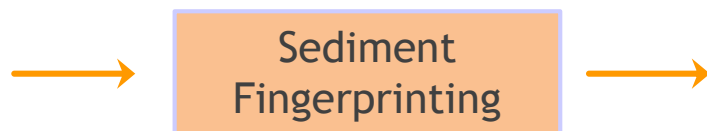
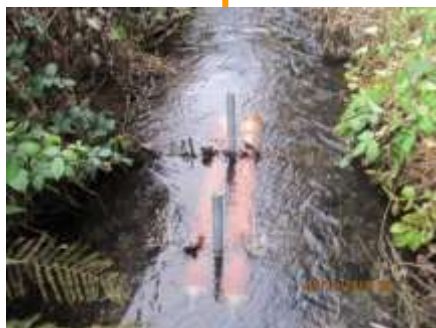


Key Research Elements

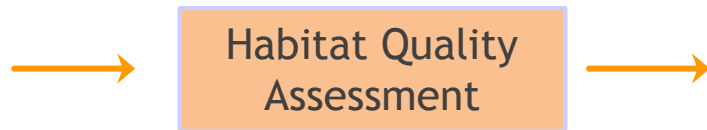
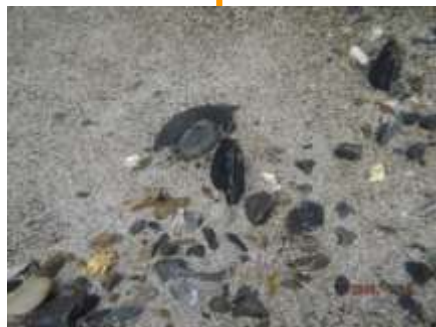
Key Deliverables



Understanding of sediment yields across an Irish land use gradient



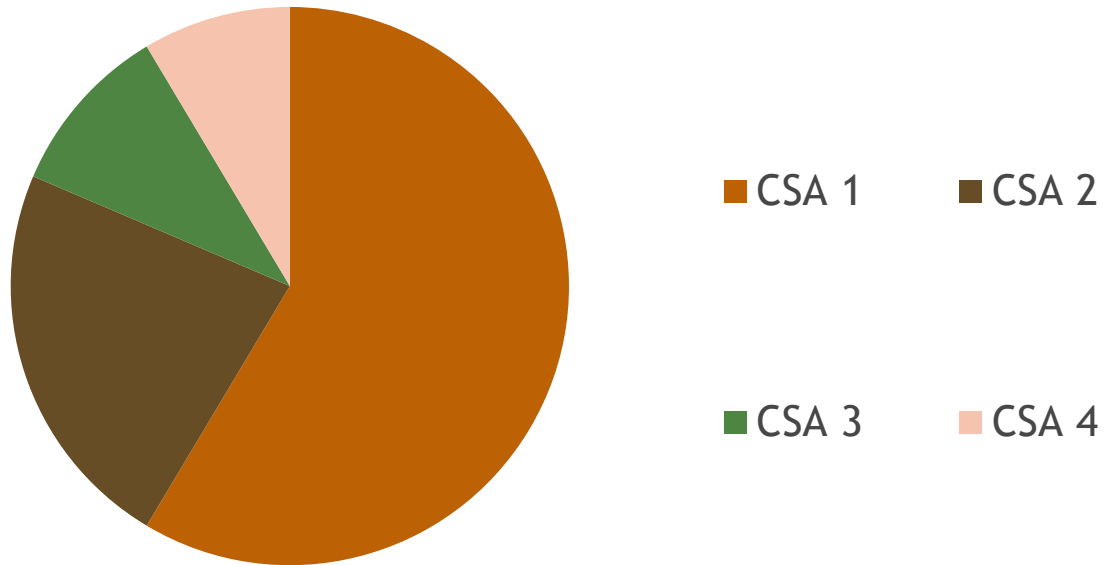
Attribution of suspended sediment to critical sources



Knowledge of how land use affects physical connectivity in sensitive habitats

Impact of Research

Attribution of sediment loads to Critical Source Areas (CSAs)



→ Targeted Mitigation





Karen O'Neill
karen.oneill@teagasc.ie



The Irish Agriculture and Food Development Authority