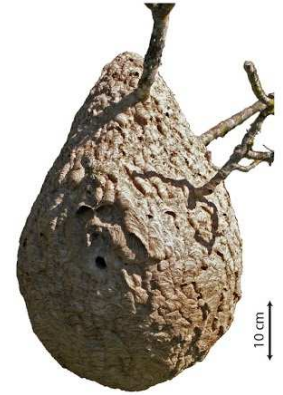


# Asian hornet (*Vespa velutina var. nigrithorax*) comparison identification guide

If the Asian hornet were to become established in Ireland it could have a significant negative impact on honeybees and other pollinators. Please report suspected sightings immediately with a photo to <http://bit.ly/1OOiWNO> or e-mail [invasives@biodiversityireland.ie](mailto:invasives@biodiversityireland.ie). In Ireland, it is frequently confused with the native Greater hornet wasp. In GB it is confused with the European hornet which is NOT found in Ireland.

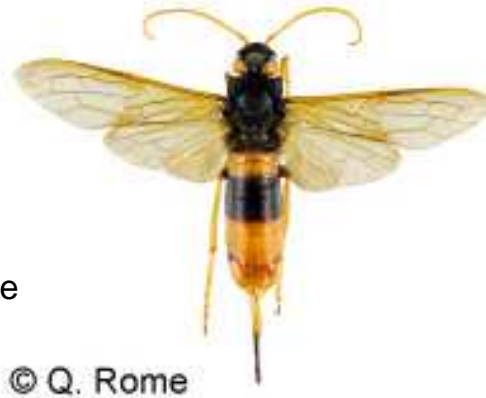
## Asian hornet (*Vespa velutina nigrithorax*) - **Potential invader**

- ✓ Queen up to 3cm & worker up to 2.5cm long
- ✓ Dark colour antennae
- ✓ Legs yellow at the ends
- ✓ Abdomen mostly black except for yellow band on 4<sup>th</sup> segment
- ✓ Entirely brown or black thorax
- ✓ Large pear-shaped nest with small opening on the side. Mostly on tall trees but will use sheds etc. © Q. Rome
- ✓ **NOT known to be in Ireland**



## Greater hornet wasp (*Urocerus gigas*)

- ✓ Female up to 4.5cm in length
- ✓ Antennae and 'false' eyes on head yellow
- ✓ Yellow legs
- ✓ Long cylindrical abdomen
- ✓ Distinctive yellow and black banded abdomen
- ✓ Female has an obvious long sting-like appendage (ovipositor) to lay eggs, it does not sting
- ✓ **Native Irish species**



## European hornet (*Vespa crabro*)

- ✓ Queen up to 3.5cm & worker up to 2.3cm long
- ✓ Yellow antennae
- ✓ Yellow orange to brown colour
- ✓ Predominantly pale yellow abdomen with black stripes
- ✓ Large nest with wide opening at the bottom
- ✓ Native in GB and continental Europe
- ✓ **NOT known to be in Ireland**

