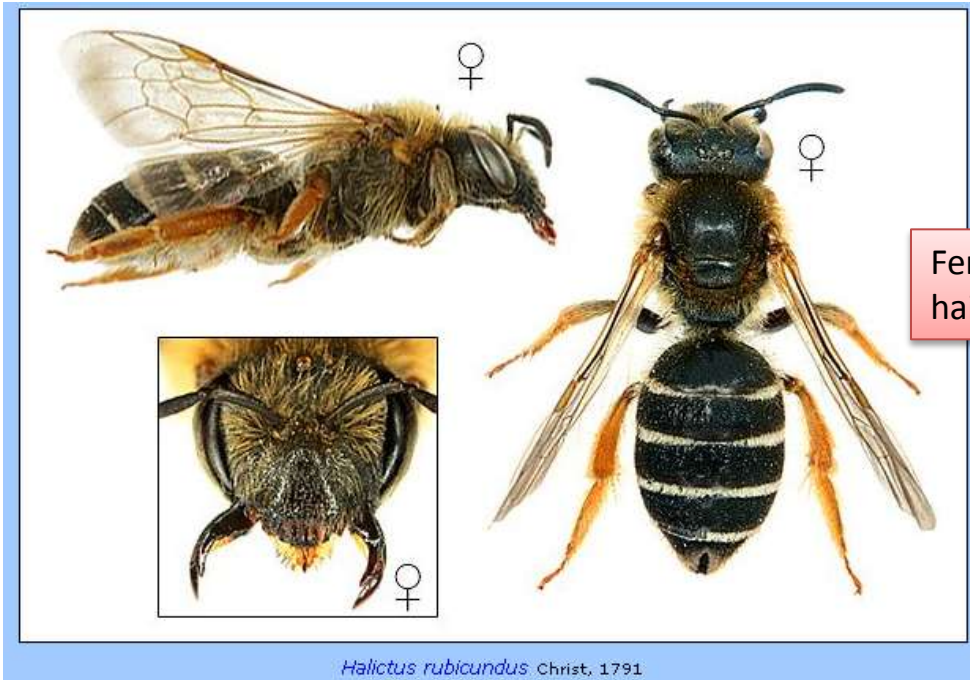


SOLITARY BEES THAT CAN BE IDENTIFIED IN THE FIELD WITH CARE

Special thanks to Josef Dvořák who has very kindly allowed his photographs of pinned specimens to be used in this guide.

<http://www.biolib.cz/en/gallery/dir388>

Halictus rubicundus



Females have very obvious white hair bands and orange hind legs

Medium sized solitary species (9-12mm)

Found from March – September

Common and found in a wide range of habitats, including parks and gardens.

Can nest in large aggregations

<http://www.biolib.cz/en/gallery/dir388>

More photographs: <http://www.bwars.com/index.php?q=bee/halictidae/halictus-rubicundus>

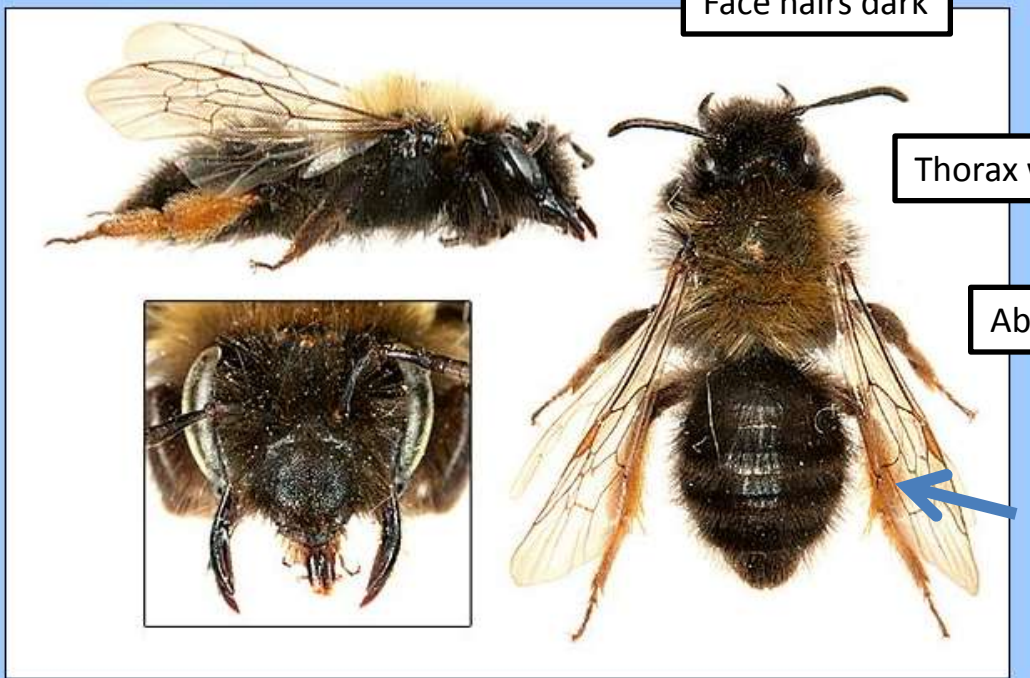
Andrena clarkella

Face hairs dark

Thorax with ginger or brown hairs

Abdomen black with dark hairs

Hind leg orange (both the leg itself and the hairs)



Andrena clarkella (Kirby, 1802) - Clark's Mining Bee

Large solitary species (11-15mm)

Spring flight period (March-June)

Ground nesting

Feeds only on Willow. Found in habitats where Willow is present

<http://www.biolib.cz/en/gallery/dir388>

More photographs: <http://www.bwars.com/index.php?q=bee/andrenidae/andrena-clarkella>

Andrena clarkella

Abdomen black with dark hairs



Hind leg orange (both the leg itself and the hairs)

© Janet Whelehan

© Janet Whelehan

Face hairs dark



© Áine & Andrew Fenner

Thorax with ginger or brown hairs



© Lynda Weekes

The upper part of the hind leg can be black, but otherwise it is orange

